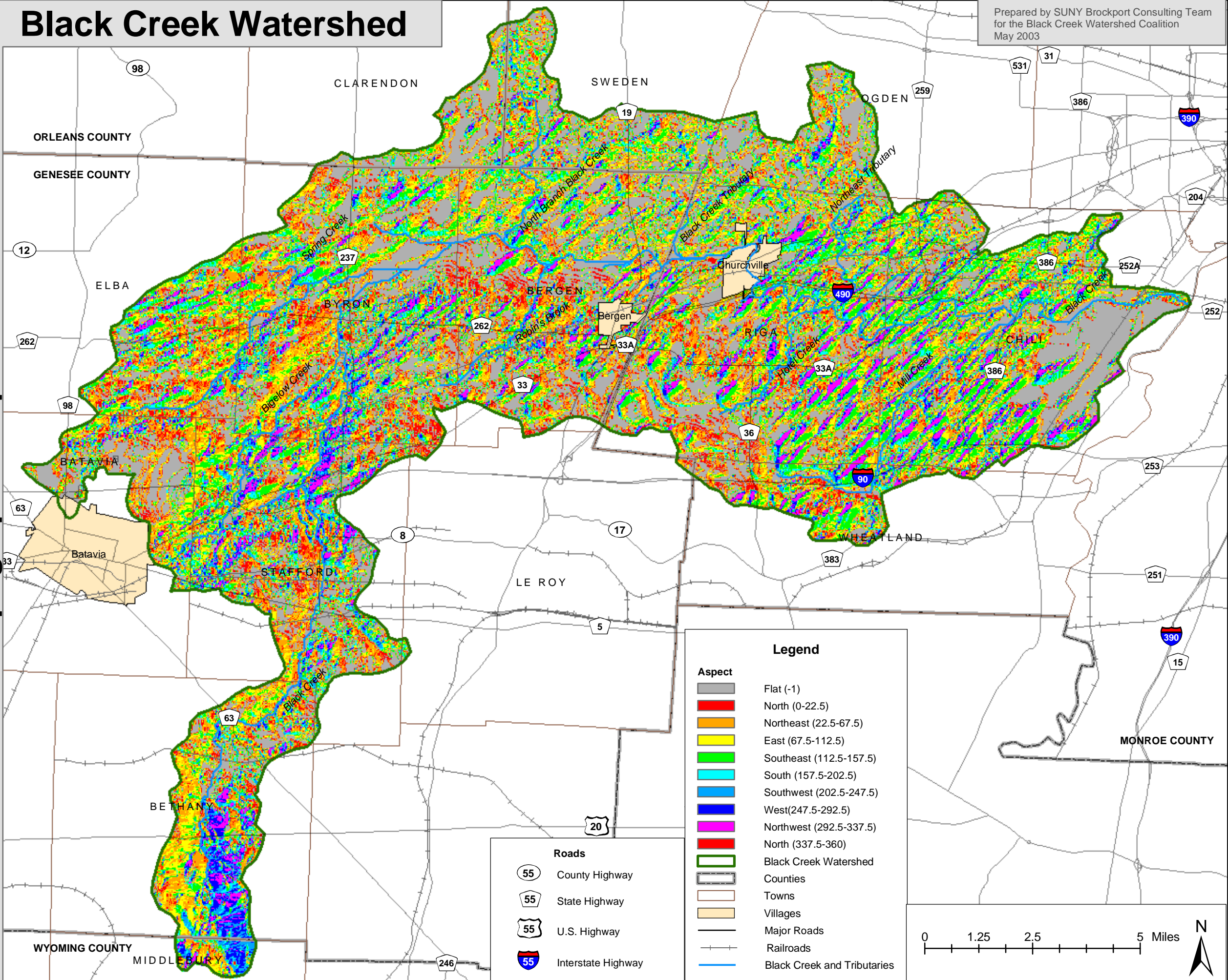


Black Creek Watershed

Prepared by SUNY Brockport Consulting Team
for the Black Creek Watershed Coalition
May 2003

Topographic Aspect

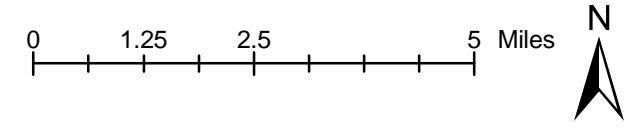


Legend

Aspect	
	Flat (-1)
	North (0-22.5)
	Northeast (22.5-67.5)
	East (67.5-112.5)
	Southeast (112.5-157.5)
	South (157.5-202.5)
	Southwest (202.5-247.5)
	West (247.5-292.5)
	Northwest (292.5-337.5)
	North (337.5-360)
	Black Creek Watershed
	Counties
	Towns
	Villages
	Major Roads
	Railroads
	Black Creek and Tributaries

Roads

	County Highway
	State Highway
	U.S. Highway
	Interstate Highway



DISCLAIMER: A degree of error is inherent in all maps. This map is distributed "AS-IS" without warranties of any kind, either expressed or implied, including but not limited to warranties of suitability to a particular purpose or use. This map is for illustration purposes only. It is not suitable for site-specific decision making, should not be construed as a legal document or survey instrument, and should not be used for making financial or any other commitments.